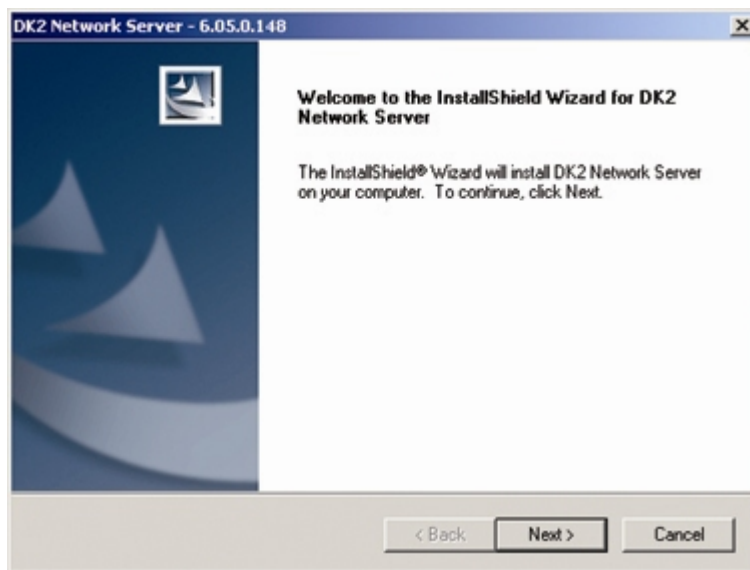


Installation Instructions for DK2 Server Software

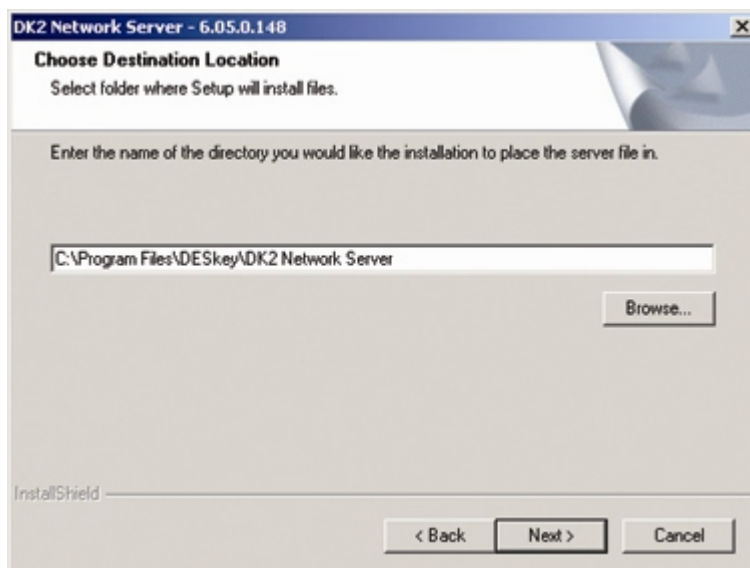
DESkey drivers are installed as part of the installation process. However, to enable the client workstations connect to the dongle server, you need to install the DK2 Server software on the workstation where the dongle is attached.

Please note that you need to install the DK2 Server software *only on to the dongle server workstation.*

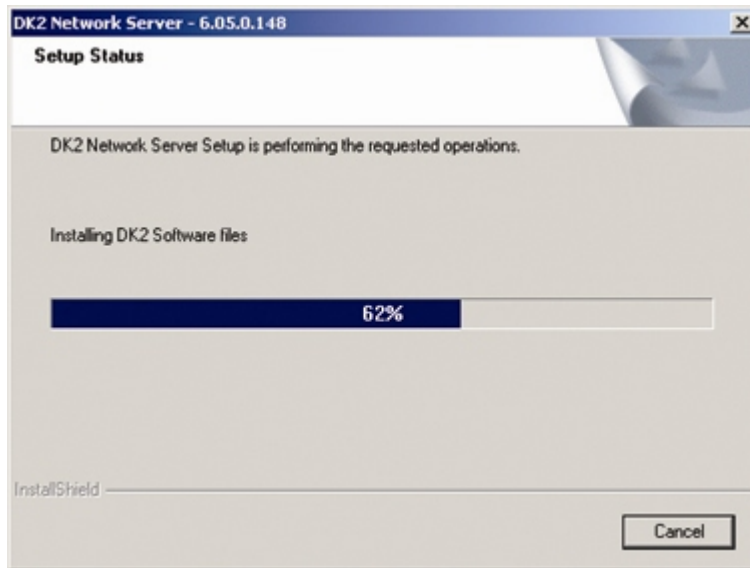
- ✚ Attach the dongle to the workstation.
- ✚ Run **dnsrv32.exe**
- ✚ Click OK to start the DK2 Network Server installation.
- ✚ Click Next to continue.



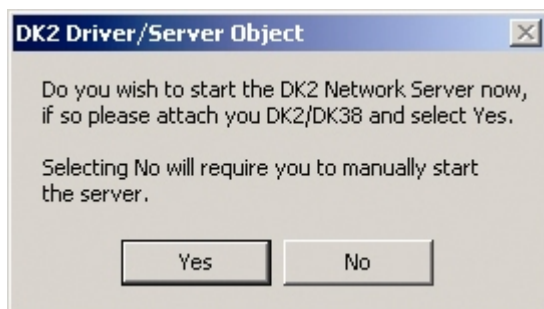
- ✚ Leave the destination location as default and click Next to start the installation.



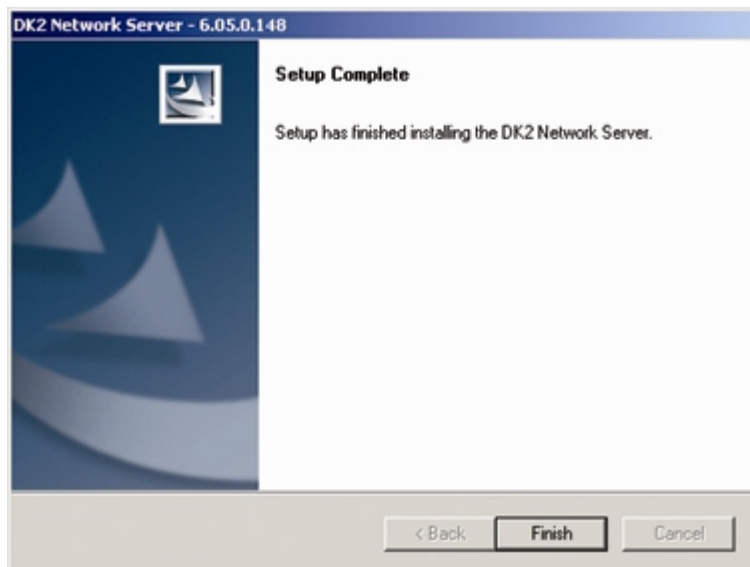
- ✚ A progress bar will be displayed as the software is installed.



- ✚ Ensure the dongle is attached and choose **Yes** to start the DK2 Dongle Server.



- ✚ This will finalise the installation.

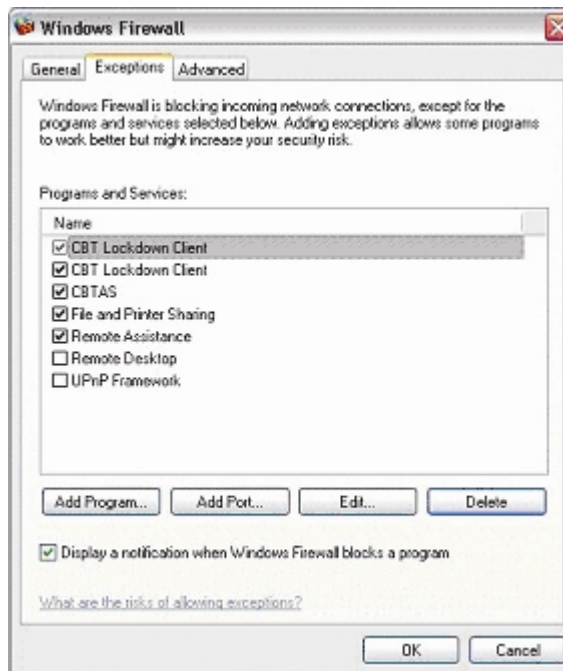


Adding DESkey port in Windows XP (Service Pack 2) firewall

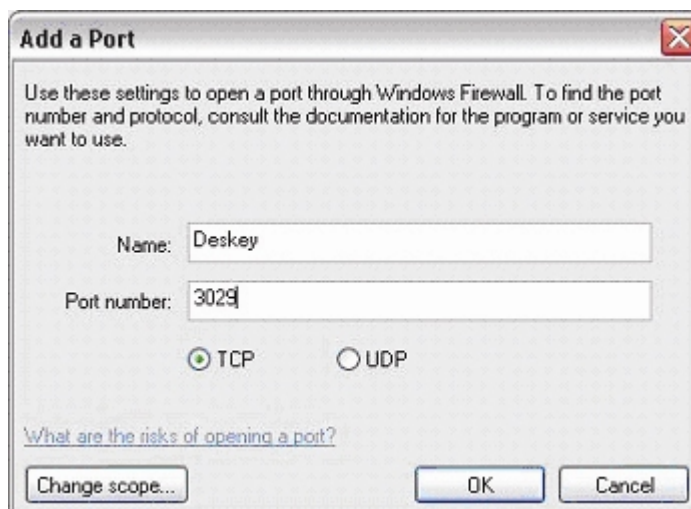
You are required to enable the dongle to be shared by adding a DESkey port in the Windows XP Service Pack 2 built-in firewall of the PC which is acting as the dongle server.

Please note that the instructions below apply only to PCs running on Windows XP Service Pack 2 operating system. Please skip this part if you don't have Windows XP Service Pack 2 installed on the dongle server PC.

- ✚ From the **Start** menu open the **Control Panel**.
- ✚ Open **Windows Firewall** and click on the **Exceptions** tab.



- ✚ Click on **Add Port**.
- ✚ Type in **Deskey** as the port name and **3029** as the port number.

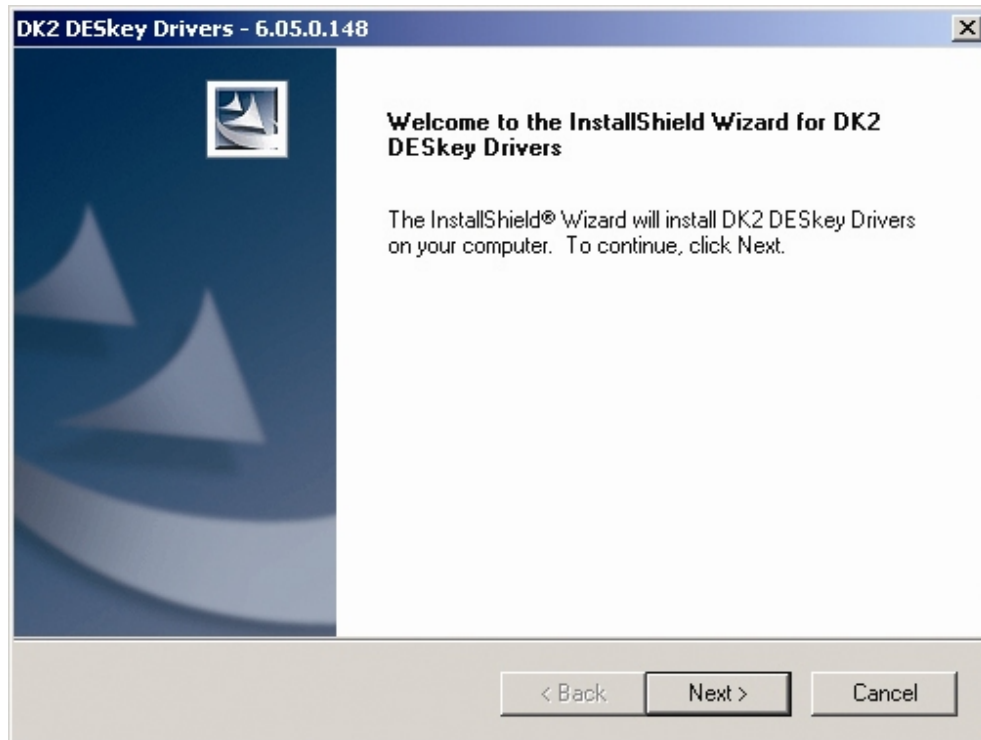


- ✚ Click **OK** and close Windows Firewall and the Control Panel.

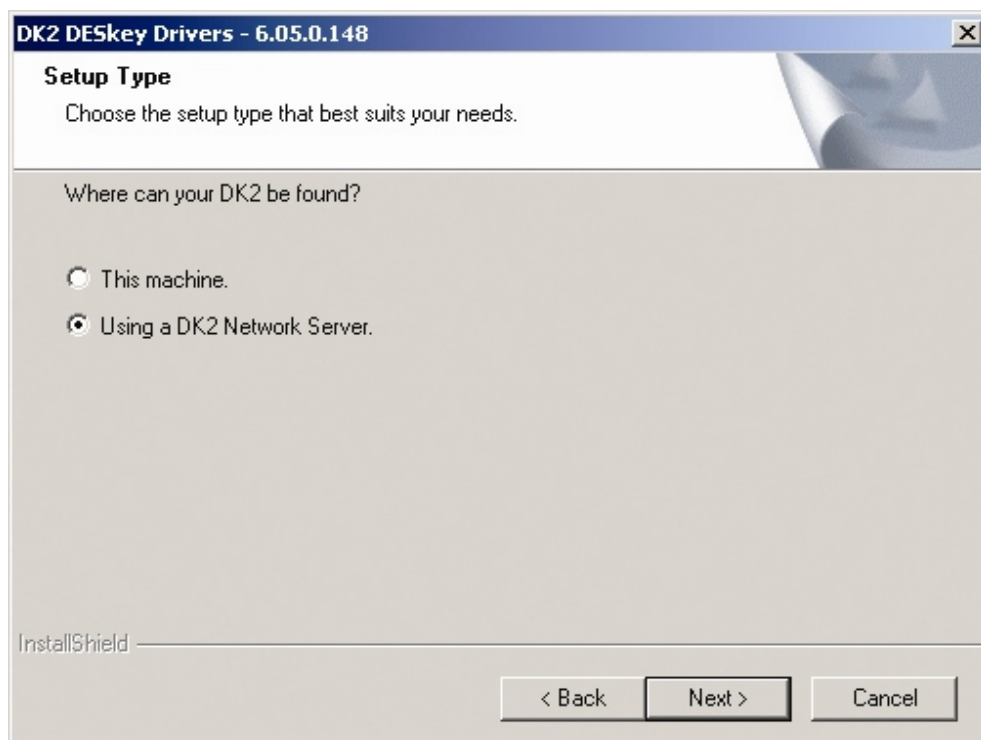
Installation Instructions for DK2 Drivers

Once the product installation is complete, DK2 DESkey drivers installation will automatically start. If you want to install DK2 Drivers separately please run **dk2wn32.exe** from each client workstation.

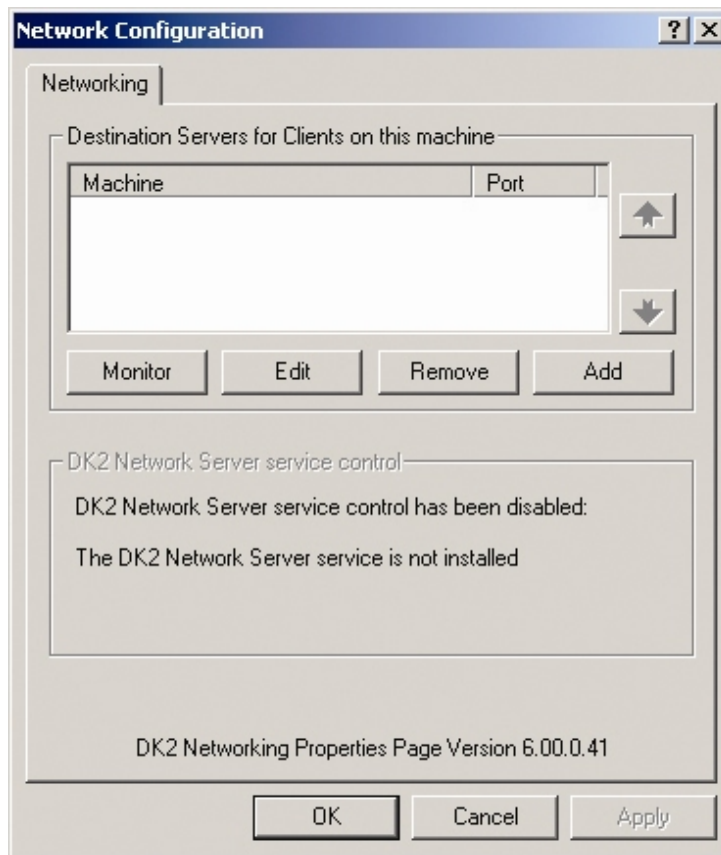
- Click **Next** to continue.



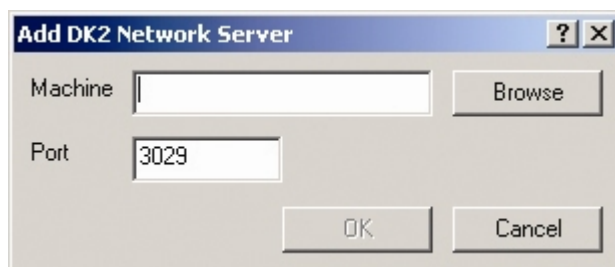
- The Setup Type window will be displayed. Choose **Using a DK2 Network Server** and click **Next**.



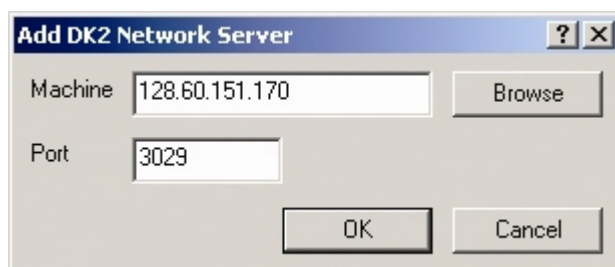
- ✚ When the installation is complete, the **Network Configuration** window will be displayed. Click **Add** to add DK2 Network Server



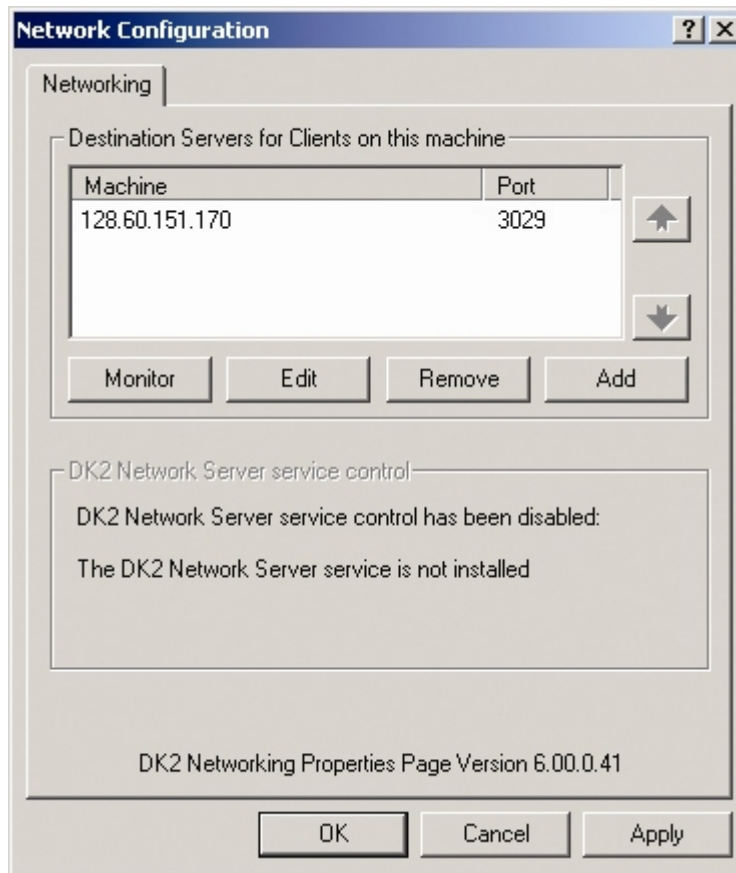
- ✚ Type in the **Machine ID** or the **static IP address** of the dongle server workstation. Alternatively, you can click **Browse** to find the dongle server workstation on the network.



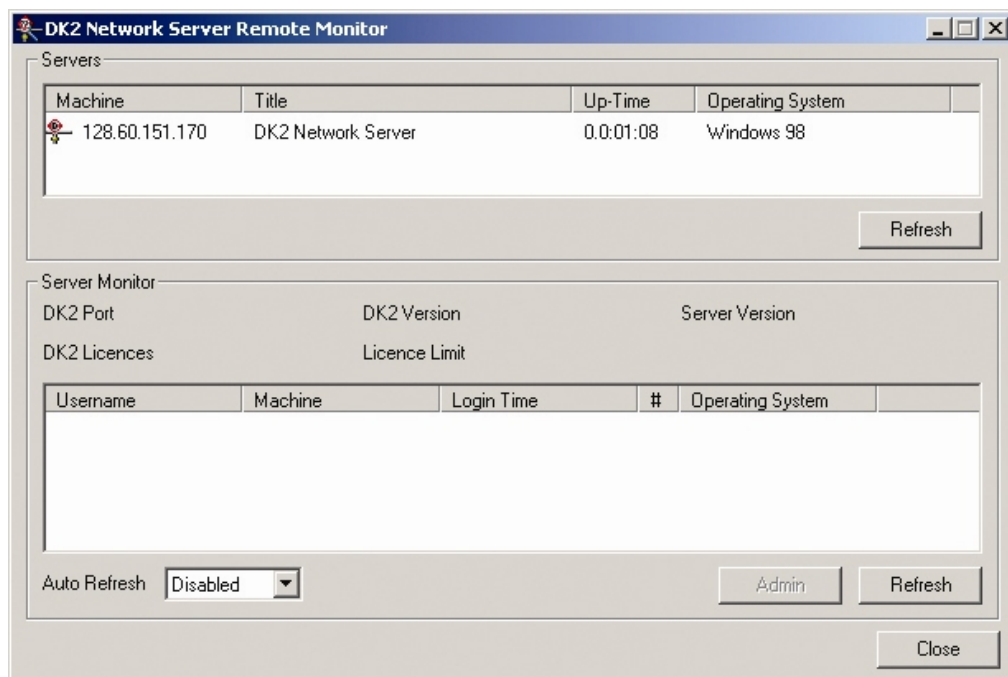
- ✚ Click **OK** to confirm. (IP number 128.60.151.170 used as an example)



- The Network Configuration window will display the IP address (or Machine ID) of the dongle server workstation. Click **Apply** to save the changes.



- Ensuring the dongle server workstation is switched on, the dongle is attached and the DK2 Network Server is started, click **Monitor** to verify the DK2 Driver installation has been done correctly and the client PC can connect to the dongle server.



You should see the DK2 Network Server machine listed in the Servers window once the client workstation is connected to the dongle server.

Click **Close** to end monitoring.

- Click **OK** on Network configuration window and then click **Finish** to finalise DK2 DESkey drivers installation.

